

PROJECT GALLERY





01

INTRODUCTION



03

INDUSTRIAL



Founded in 1985 in Wilkes-Barre, **Mericle Commercial Real Estate Services** is Northeastern Pennsylvania's leading developer of industrial, flex, office, and medical space. Our buildings can be found in 15 business parks and range in size from 5,000 square feet to 750,000 square feet. We list 40 Fortune 1000 companies among our many tenants and clients.

We thank you for taking the time to take a brief glimpse of just some of our portfolio. We will be pleased to hear from you if you would like more information about our capabilities.





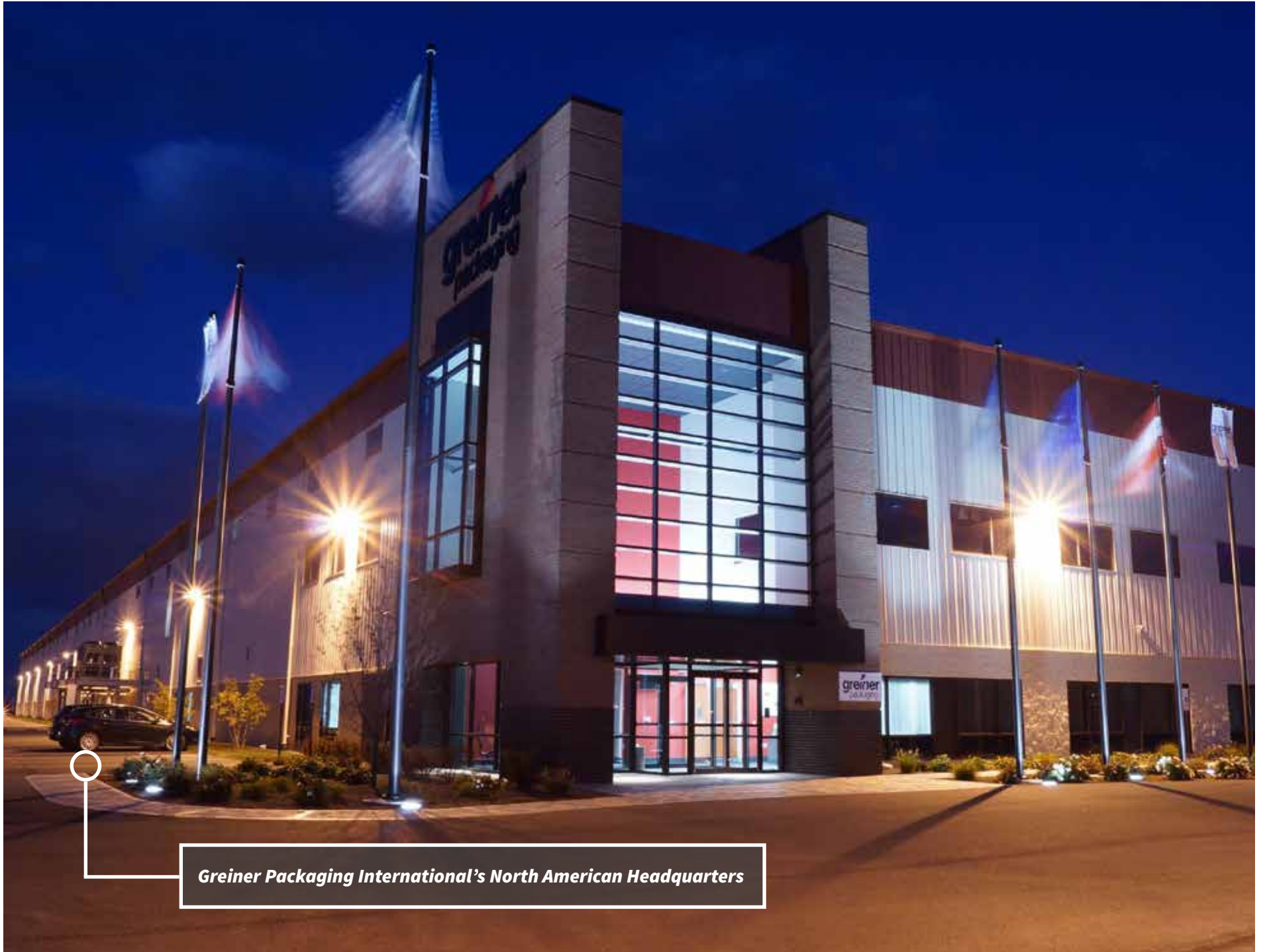
Mericle's Headquarters in the East Mountain Corporate Center, Plains Township, PA.



INDUSTRIAL



Mericle has developed some of the largest bulk industrial buildings and premier manufacturing buildings in the region. All of these buildings feature high ceilings, wide column spacing, modern loading, abundant on-site trailer storage, very reliable power and natural gas, and immediate interstate access.



Greiner Packaging International's North American Headquarters





Mericle installs the Butler M-24 standing seam roof system on most of its buildings. The MR-24 roof system boasts the industry's only true 360-degree, double lock seam to assure complete weather-tightness and structural integrity. More than two billion square feet of MR-24 roof is in place worldwide. The MR-24 roof is considered to have the best warranty in the industry.



Mericle, a Butler Builder™, is proud to be part of a network of building professionals dedicated to providing you the best construction for your needs.







BEFORE



Mericle customized the main entrance to its spec industrial building in CenterPoint Commerce & Trade Park East to meet the needs of its tenant, Neiman Marcus.

AFTER









WARNING 
Dynamic test apparatus
contains substantial rotational energy
which can cause personal injury or
damage if not operated properly
TO DOWN EQUIPMENT IS PROHIBITED
UNLESS SECURED BEFORE OPERATION
See the safety guidelines listed below:
- No Climbing
- No Leaning
- No Walking into Rotating Components
- No Reaching
- No Bumping
- No Running
- No Smoking
- No Eating or Drinking
- No Operation with Parking Brake Applied
- No Operation with Lights and Horn
- No Operation with Equipment

FLEX



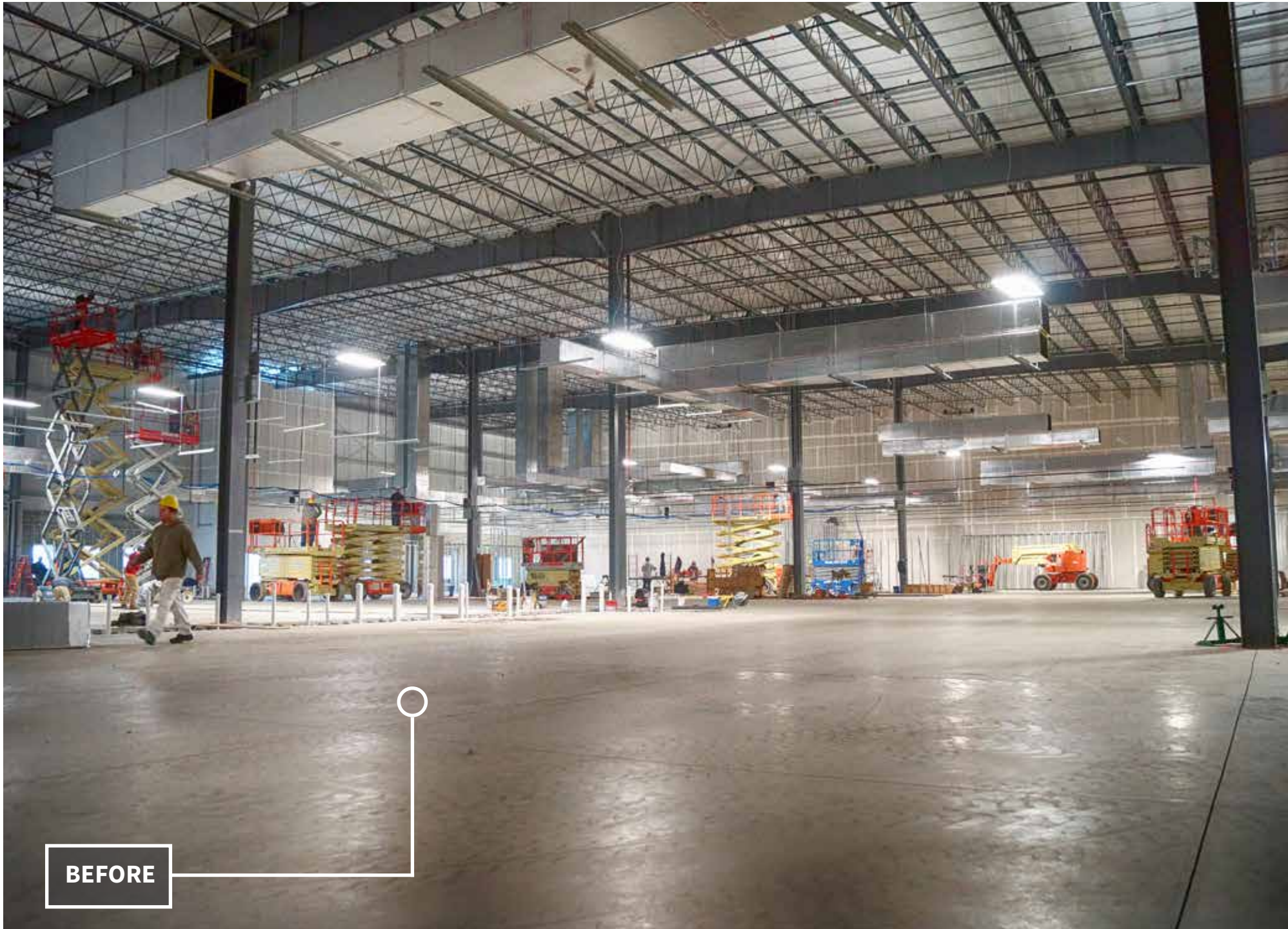
Mericle pioneered the development of flex space in Northeastern Pennsylvania. Because of their flexible design, these buildings can accommodate just about any business, from manufacturing to distribution to office to medical. All of Mericle's flex buildings feature architecturally designed facades, high ceilings, modern loading, energy-efficient lighting and heating, and plenty of room on-site for employee and trailer parking.











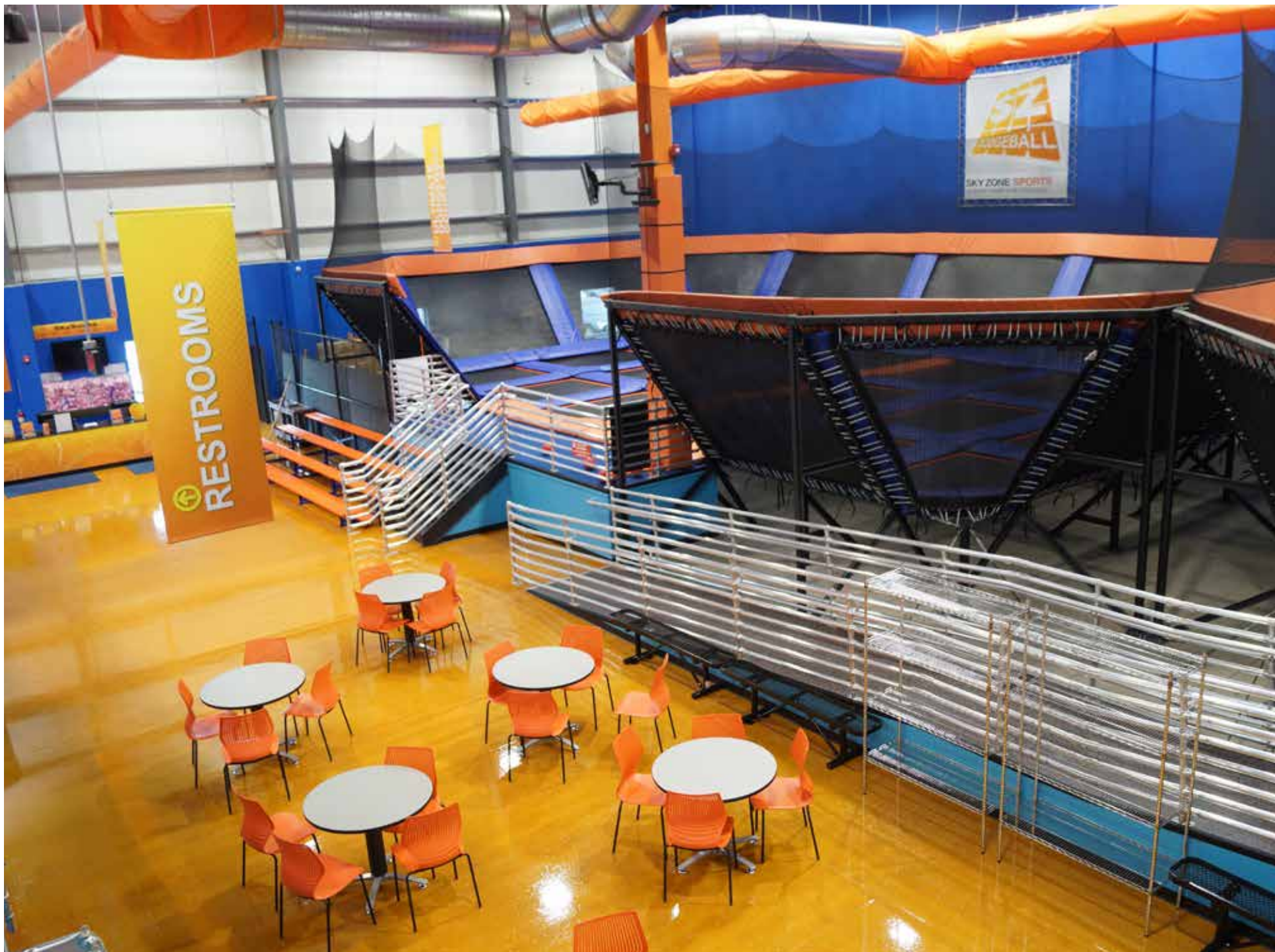
BEFORE

Mericle converted this flex building in CenterPoint Commerce & Trade Park East into customer service space for insurance manager Maximus, Inc. The entire fit-out was completed in 60 days.

AFTER









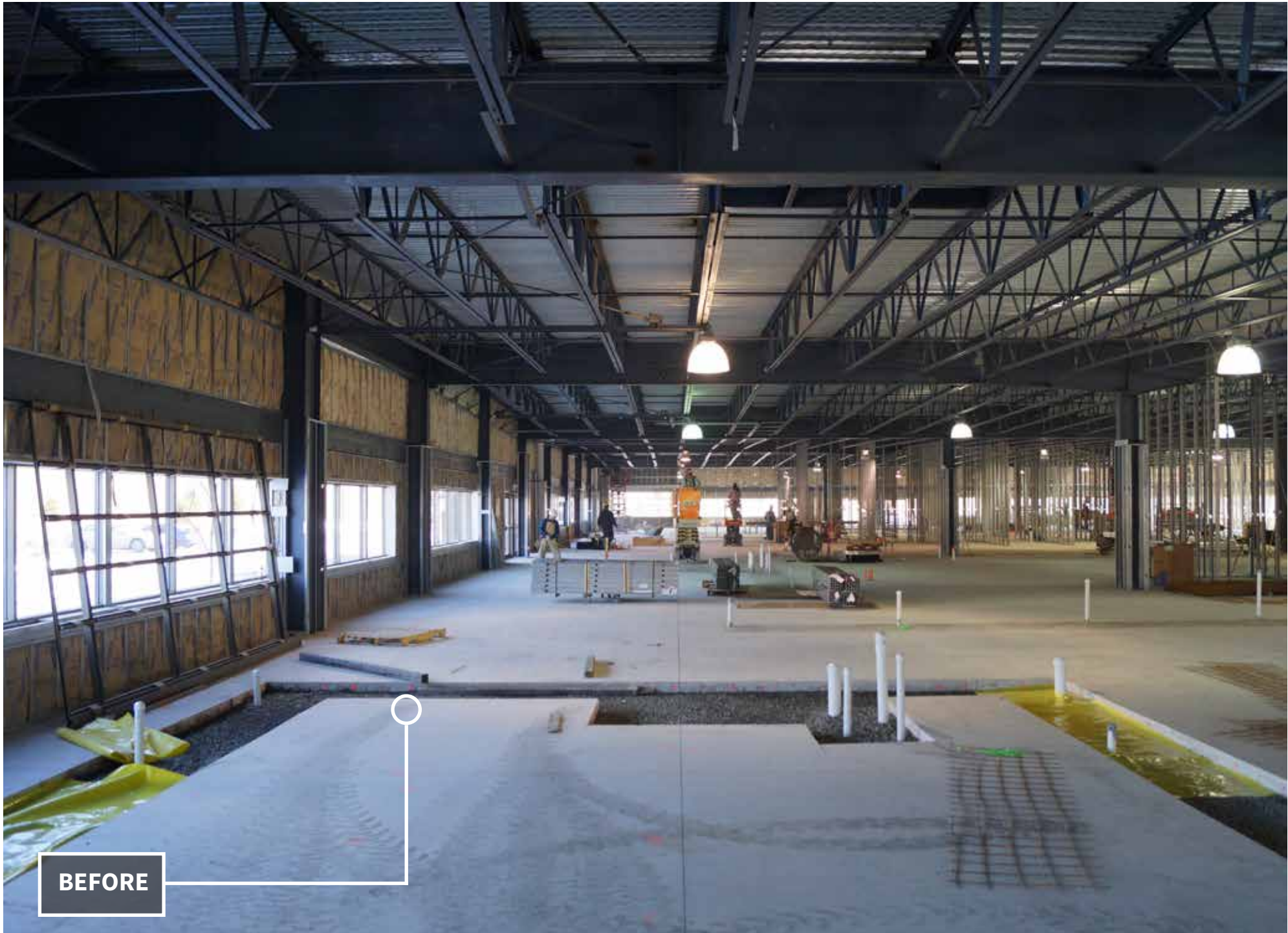
OFFICE/MEDICAL



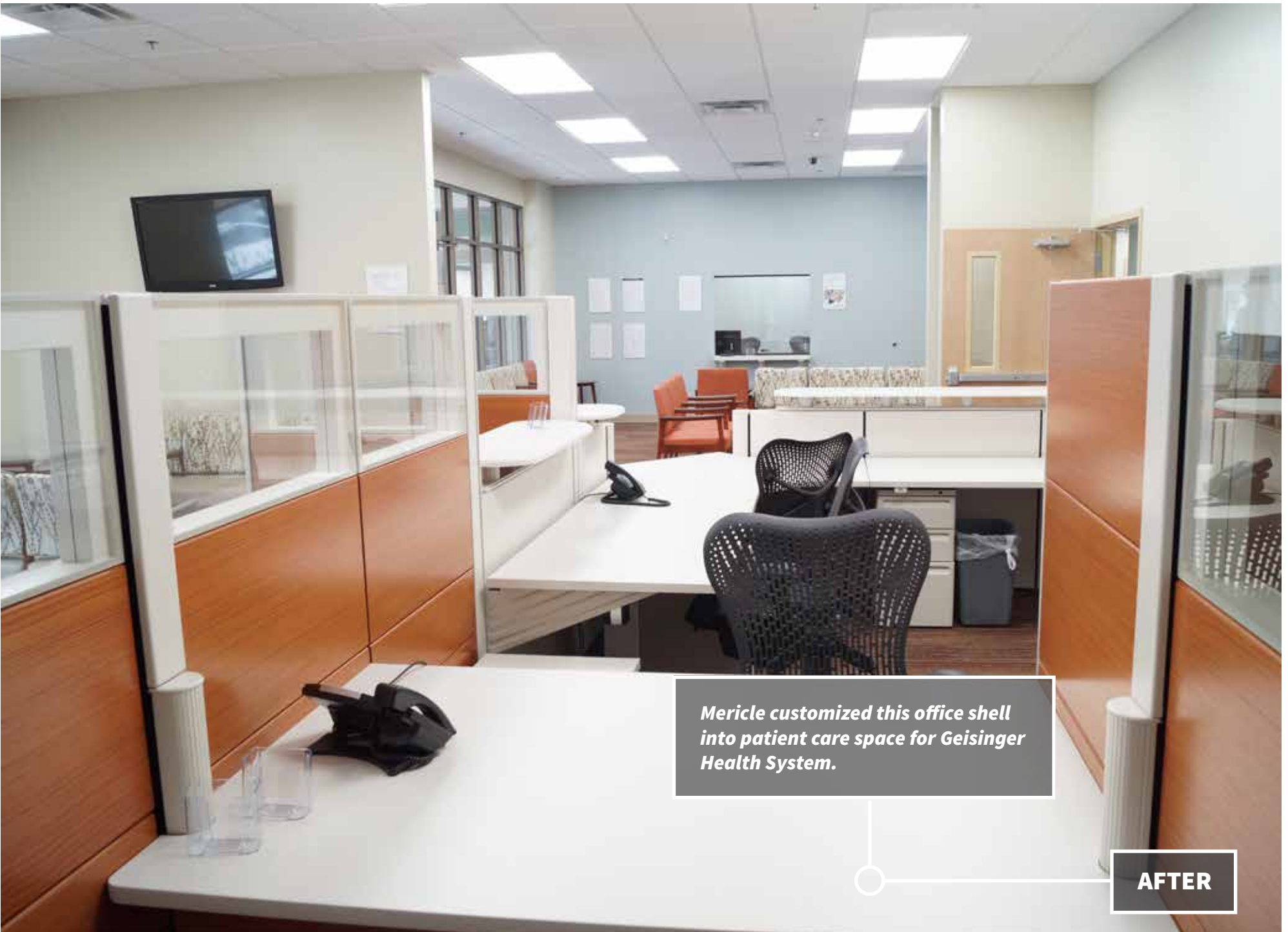
From developing multi-story Class A buildings, to customizing flex space, to retro-fitting older buildings, Mericle has provided more office and medical space solutions than any other developer in Northeastern Pennsylvania. Mericle's office and medical buildings feature modern finishes, reliable utilities, abundant employee parking, and very affordable lease rates.







BEFORE



Mericle customized this office shell into patient care space for Geisinger Health System.

AFTER





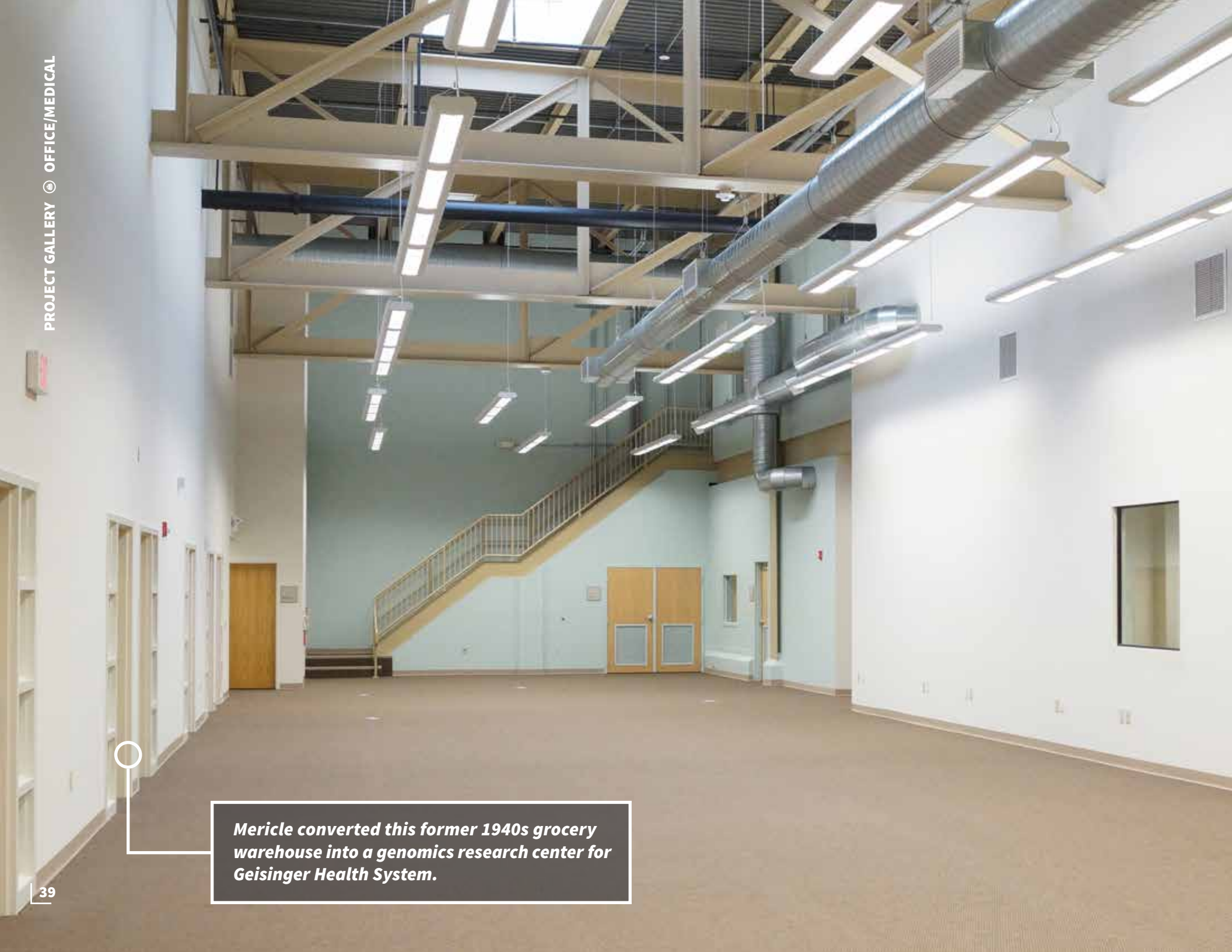
Benco Dental's World Headquarters



PROJECT GALLERY © OFFICE/MEDICAL







Mericle converted this former 1940s grocery warehouse into a genomics research center for Geisinger Health System.



CONTACT OUR DEVELOPMENT TEAM. 570.823.1100



Bob Besecker
Vice President



Jim Hilsher
Vice President



Bill Jones
Vice President



MERICLE
COMMERCIAL REAL ESTATE SERVICES



mericle.com

SERVING PENNSYLVANIA'S 1-81 CORRIDOR